



# COMPOSITES

50 YEARS OF RESTORATIVE INNOVATION



# SDI'S MOST RECOMMENDED COMPOSITES

## LUNA 2



BPA FREE

## UNIVERSAL COMPOSITE

Luna 2 is SDI's standout universal composite, with a unique blend of fillers to deliver high optical and mechanical properties. Praised for its handling and natural tooth-like aesthetics, Luna 2 makes placing a composite restoration easier than ever.

- Non-stick handling that maintains its sculpted shape
- Chameleon effect for accurate shade matching
- Versatile composite suited for anterior or posterior restorations



DR MOHAMED SAAD [ALGERIA]

DR GIOVANNE NERI AND DR ANDRE MATTOS [BRAZIL]



Luna 2 is an extremely versatile composite, with excellent viscosity that ensures efficient handling and success in primary anatomy.  
**PROF DR LEONARDO UBALDO**  
 [BRAZIL]



	13 CLINICAL EVALUATORS
	430 TOTAL USES
	93% CLINICAL RATING

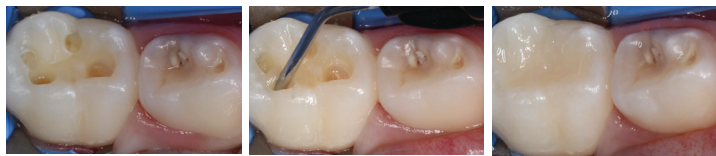
## LUNA FLOW



## FLOWABLE COMPOSITE

Luna Flow is an extra strong flowable composite that is available in two viscosities: regular and low viscosity. Lauded for its shade matching abilities and controlled handling, Luna Flow delivers seamless and easy restorations in a range of clinical situations.

- Effortlessly flows to margins
- High strength and wear resistance
- Thixotropic for high control during application



BEFORE  
 DR CARLA COHN [CANADA]

### Currently using Wave?

Upgrade to Luna Flow LV. Enjoy high strength, improved radiopacity and thixotropic properties.



# SDI'S MOST RECOMMENDED COMPOSITES

## STELA



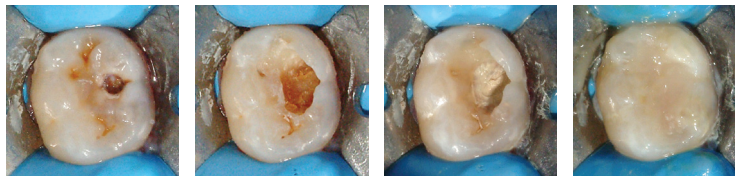
## SELF CURE COMPOSITE

Stela is an innovative high-performance self cure composite that is available in capsule or automix syringe delivery formats. Stela offers an unlimited depth of cure and low-stress polymerisation with a gap-free interface. It is BPA free and does not require acid etching or light curing. Stela delivers consistent and reliable strength and durability for long lasting restorations.

- Self-curing unlimited bulk fill
- Gap-free interface
- High bond strength
- Just two simple steps
- High strength



BEFORE AFTER  
PROF DR GONZALO ARANA GORDILO [COLUMBIA]



INITIAL ISOLATION CAVITY PREPARATION CAVITY PREPARATION IMMEDIATE FINAL RESTORATION  
DR LUIS MARTAGON [MEXICO]



The combination of Stela Primer and the self-curing Stela restorative generates low polymerisation stress, which enables this bulk-fill composite system to create a gap-free bonding interface.

PROF DR SALVATORE SAURO [SPAIN]



## AURA BULK FILL



## BULK FILL COMPOSITE

Aura Bulk Fill is a natural looking posterior restorative available in one universal shade for ease of use and reduced inventory. Offering a high depth of cure without the need for a capping layer, restorations are placed easily and efficiently using Aura Bulk Fill in a matter of seconds.

- 5mm\* depth of cure
- Waxy consistency for packability
- Low volumetric shrinkage



BEFORE AFTER 6 YEARS POST PLACEMENT  
DR FABIO SENE [BRAZIL]



The characteristics are ideal for any restoration, primary or permanent teeth. I plan to continue using Aura Bulk Fill as my go to composite.

DR LIEL GRINBAUM [USA]



\*Comparison of DOC and Hardness in Composite Bulk Fill Products, Sundaralingam S, Keck S, Pagni S, Perry R, J Dent Res Vol #95 (Spec Iss A): Final Presentation ID 0643, (Comparison of DOC and Hardness in Composite Bulk Fill Products IADR Abstract Archives).

# AWARDED COMPOSITES FOR ALL INDICATIONS

## UNIVERSAL COMPOSITES

### LUNA 2

Luna 2 is SDI's standout universal composite, with a unique blend of fillers to deliver high optical and mechanical properties.

- Non-stick handling that maintains its sculpted shape
- Chameleon effect for accurate shade matching
- Versatile composite suited for anterior or posterior restorations



### AURA EASY

Aura Easy is a universal composite available in 4 simplified shades to ensure easy restorations with reduced inventory.

- 4 shades cover 16 Vita® shades
- Non-stick and easy to sculpt
- Wear resistant with high strength



## FLOWABLE COMPOSITES

### LUNA FLOW

Luna Flow is an extra strong flowable composite available in two viscosities that offer high mechanical and optical properties.

- Effortlessly flows to margins with thixotropic properties
- High strength, radiopacity and wear resistance
- Accurate shade matching



### AURA EASYFLOW

Aura Easyflow is a universal flowable composite available in 4 simplified shades with optimised features for every layer of use.

- 4 shades cover 16 Vita® shades
- Thixotropic for maximum control during application
- High flexural strength and radiopacity



### WAVE

Wave is a universal flowable composite with proven mechanical properties that is available in three viscosities.

- Natural fluorescence
- Three viscosities



## SELF CURE COMPOSITES

### STELA

Stela is an innovative high-performance self-cure composite. Stela offers an unlimited depth of cure and low-stress polymerisation with a gap-free interface.

- Self-curing unlimited bulk fill
- Gap-free interface
- High bond strength
- Just two simple steps
- High strength



## BULK FILL COMPOSITES

### AURA BULK FILL

Aura Bulk Fill is a posterior composite with a natural looking finish available in just one universal shade for easy and quick restorations.

- 5mm\* depth of cure
- Non-stick, waxy consistency
- Low volumetric shrinkage



\*Comparison of DOC and Hardness in Composite Bulk Fill Products, Sundaralingam S, Keck S, Pagni S, Perry R, J Dent Res Vol #95 (Spec Iss A): Final Presentation ID 0643, [Comparison of DOC and Hardness in Composite Bulk Fill Products IADR Abstract Archives].

# CHOOSE THE RIGHT COMPOSITE FOR EVERY INDICATION

		UNIVERSAL		SELF CURE	BULK FILL	FLOWABLE		
		LUNA 2	AURA EASY	STELA	AURA BULK FILL	LUNA FLOW	AURA EASYFLOW	WAVE
<b>SHADES</b>	VITA®	○				○		○
	SIMPLIFIED		○				○	
	UNIVERSAL			○	○			
<b>HANDLING</b>	CREAMY	○						
	FIRM		○		○			
	FLOWABLE							○
	THIXOTROPIC FLOWABLE			○		○	○	
<b>DEPTH OF CURE</b>		2mm	2mm	Unlimited	5mm*	2mm	2mm	2mm
<b>MAIN INDICATIONS</b>	UNIVERSAL	○	○	○		○	○	○
	ANTERIOR	○				○		
	POSTERIOR				○			
	INJECTABLE					○		
<b>CATEGORY</b>	AESTHETIC	○				○		
	SIMPLICITY	○	○	○		○	○	○
	EFFICIENCY			○	○			

\*Comparison of DOC and Hardness in Composite Bulk Fill Products, Sundaralingam S, Keck S, Pagni S, Perry R, J Dent Res Vol #95 (Spec Iss A). Final Presentation ID 0643, [Comparison of DOC and Hardness in Composite Bulk Fill Products IADR Abstract Archives].

# SDI | LUNA 2

UNIVERSAL COMPOSITE



## LUNA 2

Luna 2 is the next generation Luna universal composite with an improved blend of fillers that were researched and developed at SDI to deliver enhanced handling, very high radiopacity and reliable mechanical properties. Luna 2 is BPA free for health-conscious patients. Luna 2 makes placing a composite easier than ever.

## EASY & ACCURATE SHADE MATCHING

Luna 2 offers the innovative Logical Shade Matching Technology and Chameleon Effect for simplified shade selection. Shades were developed prioritising value (lightness), while pigments are arranged in a logically increasing way, for a simpler and faster match to the Vita® Shade Guide.

## TECHNICAL INFORMATION

**COMPRESSIVE STRENGTH:** 360 MPa

**FLEXURAL STRENGTH:** 130 MPa

**RADIOPACITY:** 250% AI

**SHRINKAGE:** 2.90%

**FILLER LOAD:** 76 wt% (56 vol%)

**CLASSES:** I, II, III, IV, V

**SHADES:** A1, A2, A3, A3.5, B1, B2, C2, OA2, OA3, I, XB, 2XB

## BEFORE & AFTER



BEFORE

AFTER

Images courtesy of Dr Joana Couto [PORTUGAL]



BEFORE

AFTER

Images courtesy of Dr Mohamed Saad [ALGERIA]



Luna 2 has beautiful optics that mimic tooth structure and let you place fillings that disappear. It has great handling too: no stickiness on instruments and easy sculptability. **DR SUSAN MCMAHON [USA]**



	<b>13</b> CLINICAL EVALUATORS
	<b>430</b> TOTAL USES
	<b>93%</b> CLINICAL RATING

*"The optical qualities and chameleon effect were very good."*  
*"Luna 2 does not stick to instruments when sculpting like other composites."*

Dental Advisor Evaluators

## KEY BENEFITS

Easy and accurate shade matching with chameleon effect

Non-stick handling that maintains its sculpted shape

BPA free

High compressive and flexural strength

High radiopacity



## HANDLING AND AESTHETICS: BLIND STUDY

Luna 2 scored highest of all tested composite products in "non-stickiness to instrument" (93.8%) and "shade matching to Vita® guide" (96.9%).

**Scan the QR code to view the blind study publication**



# AURA EASY

UNIVERSAL COMPOSITE



## AURA EASY

Aura Easy is a universal composite that offers a 2mm depth of cure in four cloud shades for easy shade matching. This composite is a great addition for clinicians seeking a product that simplifies shade matching, minimises inventory, and offers easy handling with long-lasting predictable results. Aura Easy is universal and can be used with versatility in a range of composite indications.

## EASY SHADE MATCHING

The determination of tooth colour plays an important role in order to avoid additional chair time and extra costs. Aura Easy utilises a cloud shade system with just four chameleon shades that cover all 16 Vita® classical shades. Aura Easy's shades offer balance of translucency, opacity, fluorescence, and opalescence with no multi-layering required.

## TECHNICAL INFORMATION

**COMPRESSIVE STRENGTH:** 375 MPa

**FLEXURAL STRENGTH:** 115 MPa

**RADIOPACITY:** 250% Al

**SHRINKAGE:** 2.21%

**FILLER LOAD:** 81 wt% (65 vol%)

**CLASSES:** I, II, III, IV, V

### SHADES:

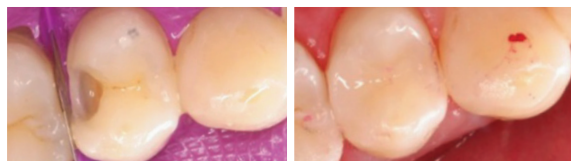
AE1 [B1, A1]

AE2 [B2, D2, A2, C1]

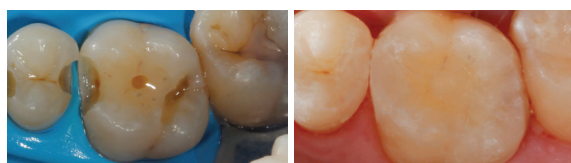
AE3 [C2, D4, A3, D3, B3]

AE4 [A3.5, B4, C3, A4, C4]

## BEFORE & AFTER



BEFORE AFTER  
Images courtesy of Dr Terry Wong [AUSTRALIA]



BEFORE AFTER  
Images courtesy of Dr Mario González-Bonilla [SPAIN]



After a couple days with Aura Easy in my practice, it was easy to see that the four shades were all I needed. Aura Easy's handling and shade matching makes it easy to create quick and beautiful restorations.  
**DR LORI TROST [USA]**



## KEY BENEFITS

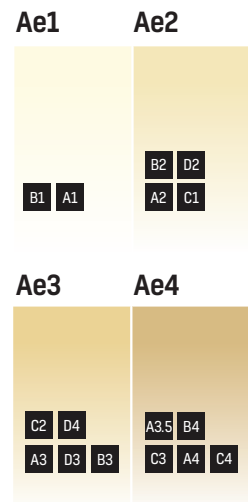
Reduced inventory with simplified shade system

Non-stick and easy to sculpt

Wear resistant with high strength

Smooth high gloss finish

## 4 SHADES COVER 16 VITA® SHADES



Approximate equivalence to VITA® A1-D4® shade guide



# STELA

SELF CURE COMPOSITE



## GAP-FREE INTERFACE

Stela features innovative technology that enables a gap-free interface. Unlike standard light cured composites, Stela polymerisation is accelerated along the restoration interface. This enables a gap free interface, reducing post operative sensitivity and the risk of premature failure.

## UNLIMITED DEPTH OF CURE

Stela is a new generation composite that will self cure to an unlimited depth. This allows full cure certainty for all restorations.

## JUST TWO SIMPLE STEPS

While traditional composite systems can take up to 120 seconds to prepare, Stela restorations are ready for placement in just 15 seconds. With Stela, clinicians can benefit from reduced in-chair time and a simplified protocol.

## TECHNICAL INFORMATION

### COMPRESSIVE STRENGTH:

Stela Automix: 331 MPa  
Stela Capsule: 333 MPa

### FLEXURAL STRENGTH:

Stela Automix: 143 MPa  
Stela Capsule: 133 MPa

### RADIOPACITY: 308% Al

### FILLER LOAD:

Stela Automix: 61.2 wt% [36.4 vol%]  
Stela Capsule: 76.8 wt% [55.4 vol%]

### CLASSES: I, II, III, V

### SHADES: Universal shade [Approximately A2/A3]



Cavity prepared and ready to be isolated with rubber dam



Final aspect after finishing and polishing

Images courtesy of Prof Dr Rocio Lazo



Cavity prepared and ready to be isolated with rubber dam



Final aspect after finishing and polishing

Images courtesy of Prof Dr Gonzalo Arana Gordilo



The application of Stela is very easy and after 4 minutes the restoration had the same shade as the tooth. Great polishability!

PROF DR ROCIO LAZO  
[PERU]



## KEY BENEFITS

Self cure flowable composite

Mitigates polymerisation stress for a gap-free interface

Self cure for unlimited depth of cure

High bond strength

Choice of capsule or automix syringe

High flexural strength

High compressive strength & high surface hardness



Scan the QR code to learn more.





# AURA BULK FILL

UNIVERSAL BULK FILL COMPOSITE



## AURA BULK FILL

Aura Bulk Fill allows speedy and simple posterior composite restorations with a natural looking finish with just one universal shade. Aura Bulk Fill offers a high depth of cure without the need for a capping layer, resulting in easy restoration placement in a matter of seconds.

## HIGH DEPTH OF CURE

The opacity of Aura Bulk Fill is a function of difference in the refractive index of its two components, the filler and the resin. The curing process alters the refractive index of the resin marginally, to match the refractive index of the filler. This lowers the opacity temporarily, allowing a deeper light penetration for a high depth of cure of 5mm\*. Upon curing, the indices move apart again to arrive at the required opacity for Aura Bulk Fill's chameleon-like finish.

## TECHNICAL INFORMATION

**COMPRESSIVE STRENGTH:** 375 MPa

**FLEXURAL STRENGTH:** 115 MPa

**RADIOPACITY:** 250% Al

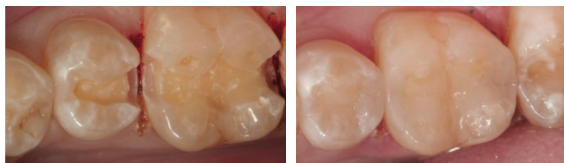
**SHRINKAGE:** 2.21%

**FILLER LOAD:** 81 wt% (65 vol%)

**CLASSES:** I, II, III, IV, V

**SHADES:** Universal shade

## BEFORE & AFTER



BEFORE

AFTER

Images courtesy of Dr Rob Lowe [USA]



BEFORE

AFTER

6 YEARS POST PLACEMENT

Images courtesy of Dr Fabio Sene [BRAZIL]



I have been using Aura Bulk Fill for three years now. The resin comes out smooth with no pull back and cures extremely strong. The polish is amazing and my posterior composites have never been better. The characteristics are ideal for any restoration, primary or permanent teeth. I have recommended this product to many associates and I plan to continue using the Aura Bulk Fill as my go to composite.

DR LIEL GRIMBAUM [USA]

## KEY BENEFITS

5mm\* depth of cure

Waxy consistency to aid creating contact points

Low volumetric shrinkage

High compressive and flexural strength



\* Comparison of DOC and Hardness in Composite Bulk Fill Products, Sundaralingam S, Keck S, Pagni S, Perry R, J Dent Res Vol #95 (Spec Iss A): Final Presentation ID 0643, (Comparison of DOC and Hardness in Composite Bulk Fill Products IADR Abstract Archives).

# SDI | LUNA FLOW

UNIVERSAL FLOWABLE COMPOSITE



## LUNA FLOW

Luna Flow is an extra strong flowable composite that is available in two viscosities. With a blend of fillers in different ultrafine sizes to enable better handling, mechanical and optical properties, Luna Flow offers high radiopacity, control over the application, easy and accurate shade matching with colour stability, strength and wear resistance.

## CONTROLLED FLOW, DOES NOT SLUMP

Luna Flow is available in two viscosities to suit your clinical needs. Use Luna Flow for controlled handling during application. This composite flows on demand, holds its shape and reduces stringiness. For clinicians who prefer more flow, use Luna Flow LV - a low viscosity option.

## TECHNICAL INFORMATION

### COMPRESSIVE STRENGTH:

Luna Flow: 421 MPa  
Luna Flow LV: 245 MPa

### FLEXURAL STRENGTH:

Luna Flow: 128 MPa  
Luna Flow LV: 120 MPa

### RADIOPACITY:

Luna Flow: 265% Al  
Luna Flow LV: 250% Al

### FILLER LOAD:

Luna Flow: 56 wt% [32 vol%]  
Luna Flow LV: 52 wt% [28 vol%]

**CLASSES:** III, IV, V and conservative I, II

**SHADES:** A1, A2, A3, A3.5, B1, B2, C2, OA2, OA3, I, XB, 2XB

## BEFORE & AFTER



**BEFORE**  
Images courtesy of Dr Carla Cohn [CANADA]



**AFTER**



**BEFORE**



**AFTER**

Images courtesy of Dr Itay Mishaeloff [ISRAEL]



Shade matching and handling of Luna Flow are outstanding. Restorations are seamless.

**DR FERNANDA ZEVIANI**  
[AUSTRALIA]



## KEY BENEFITS

Easy and accurate shade matching with colour stability

High radiopacity to aid diagnosis

Two thixotropic viscosities with high polishability

High compressive and flexural strength



**LUNA FLOW**  
Regular  
viscosity\*



**LUNA FLOW LV**  
Low viscosity\*

\*Flow at 90° angle for 40 seconds



# AURA EASYFLOW

UNIVERSAL FLOWABLE COMPOSITE



## AURA EASYFLOW

Aura Easyflow is a light cured flowable composite, refined to provide the right features for every layer of use. Whether it is used as a radiopaque liner under direct restorations or superficially to repair defects in aesthetic zones, Aura Easyflow is engineered to maximise clinical success.

## EASY SHADE MATCHING

Aura Easyflow is designed with four unique shades to simplify colour selection in aesthetic zones and enable better inventory management. Four unique Aura Easyflow shades cover 16 Vita® shades, enabling an easy switch from traditional shading systems with great handling properties.

## TECHNICAL INFORMATION

**COMPRESSIVE STRENGTH:** 421 MPa

**FLEXURAL STRENGTH:** 128 MPa

**RADIOPACITY:** 265% Al

**FILLER LOAD:** 56 wt% [32 vol%]

**CLASSES:** III, IV, V and conservative I, II

### SHADES:

AE1 [B1, A1]

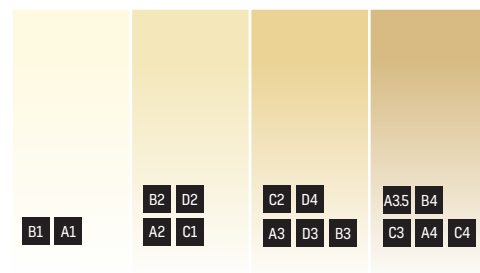
AE2 [B2, D2, A2, C1]

AE3 [C2, D4, A3, D3, B3]

AE4 [A3.5, B4, C3, A4, C4]

## 4 SHADES COVER 16 VITA® SHADES

### Ae1 Ae2 Ae3 Ae4



Approximate equivalence to VITA® A1-D4® shade guide

For Class V restorations, composites with lower modulus are desired as they are capable of flexing during tooth function which may reduce stresses along the bonding agent interface and the likelihood of debonding.\*

Yap AU et al (2002), 'Changes in flexural properties of composite restoratives after gaining in water', Journal of Operative Dentistry, 27:468-74

## KEY BENEFITS

Reduced inventory with simplified shade system

High radiopacity to aid diagnosis

Controlled flow with thixotropy

High compressive and flexural strength



# WAVE

FLUORIDE RELEASING FLOWABLE COMPOSITE



## WAVE

Wave, Wave MV and Wave HV are versatile, radiopaque, light cured flowable composites designed for anterior and posterior restorations. Wave is available in 13 specialty shades to ensure easy shade matching for all clinical needs.

## A CHOICE OF VISCOSITY

Wave is available in three viscosities which ensures clinicians have an option to suit all different clinical conditions. Wave is an extremely low viscosity flowable for situations where extra flow is preferred. Wave MV is medium viscosity and Wave HV is a high viscosity flowable composite for when firmer handling is required.

## TECHNICAL INFORMATION

### COMPRESSIVE STRENGTH:

Wave: 262 MPa  
Wave MV: 246 MPa  
Wave HV: 242 MPa

### FLEXURAL STRENGTH:

Wave: 110 MPa  
Wave MV & Wave HV: 115 MPa

### RADIOPACITY:

Original Wave: 100% AI; Wave MV & Wave HV: 150% AI

### FILLER LOAD:

Wave: 65 wt% [41 vol%]  
Wave MV: 60 wt% [39 vol%]  
Wave HV: 66 wt% [44 vol%]

### CLASSES: V and minimal I, II, III, IV

### SHADES: A1, A2, A3, A3.5, B1, B2, B3, C2, C3, D3, OA2, Gingival, Bleach

## LUNA FLOW IS THE IMPROVED WAVE

Available in two viscosities, Luna Flow improves on the current Wave formula to deliver improved flowability, higher strength and greater radiopacity. Switch today for better clinical outcomes.

	MOST FLOWABLE		THICKER FLOW
	WAVE	LUNA FLOW LV Improved formula	LUNA FLOW Improved formula
FLEXURAL STRENGTH	110 MPa	<b>120 MPa</b>	<b>128 MPa</b>
RADIOPACITY	100% AI	<b>250% AI</b>	<b>265% AI</b>
THIXOTROPIC	NO	<b>YES</b>	<b>YES</b>

### USING WAVE?

## UPGRADE TO LUNA FLOW LV

Enjoy high strength, improved radiopacity, shade matching and thixotropic properties.

## KEY BENEFITS

Natural fluorescence

No after cure shade change


Available in three viscosities

# ADHESIVES



## ZIPBOND

Zipbond Universal is a single component fluoride-releasing universal adhesive. Zipbond Universal contains the MDP monomer to achieve extremely high bond strengths across dentine and enamel, and is compatible with self-etch, selective etch and total etch techniques.

 DENTAL ADVISOR ZIPBOND 2021	29	CLINICAL EVALUATORS
	862	TOTAL USES
	93%	CLINICAL RATING

*"Zero post op sensitivity with any of the patients I used Zipbond on"*  
Dental Advisor Evaluator



## STAE

Stae is a fluoride releasing single component dentine/enamel total etch adhesive system, designed for direct bonding. Stae completely and homogeneously infiltrates the hybrid layer to ensure superior bonding to the tooth.



Zipbond Universal Bottle Refill  
1 x Zipbond Universal 5ml Bottle - 8100502



Stae Bottle refill  
1 x 5mL Stae bottle - 8100201

# ETCHANTS

## SUPER ETCH

Super Etch 37% phosphoric acid is designed for etching enamel and dentine. Super Etch non-slump gel offers precise placement, with a highly visible blue tint for added control. Super Etch is available in a range of syringe sizes and a 15mL bottle.



Scan the QR code to view the full Super Etch range



# SEALANTS

## CONSEAL F

Conseal F is the lowest viscosity resin sealant available enabling it to flow faster and deeper into the prepared pits and fissures. The Conseal F nozzle, one third of the size of other brands, enhances complete sealing and retention by allowing a deeper penetration into the smallest pits and fissures.



Scan the QR code to view the full Conseal F range

# ACCESSORIES



## POINTS

Points disposable brush applicators are used to quickly transfer small amounts of material into areas that are difficult to reach. Points are resistant to common solvents in dental materials. Points are available in three sizes: superfine, fine and medium.



Scan the QR code to view the full Points range



## PREMIUM COMPLET APPLICATOR

SDI's Premium Complet Applicator features an ergonomic design for ease of use and precision placement of composite. It is lightweight with stainless-steel front barrel for increased durability.

**Premium Complet Applicator**  
Premium Complet Applicator - 5545022



## RIVA APPLICATOR 2

Riva Applicator 2 features an ergonomic design that fits comfortably in smaller hands. It is made of superbly engineered stainless steel mechanical parts that are robust and long lasting. This sleek and sophisticated design is autoclavable for easy sterilisation.

**Riva Applicator 2**  
Riva Applicator 2 - 5545013

# EQUIPMENT



## RADII XPERT

Radii Xpert is the ideal choice for restorations of all sizes, including bulk fill restorations that require a deep cure. Radii Xpert features an LCD display and a powerful collimated light. Its unique Target Assist Technology enables you to correctly position the light and be confident of the angulation before curing.



TARGET ASSIST  
PRECISION CURING



COLLIMATED  
LIGHT



SMART TECHNOLOGY  
FOR EASE OF USE



ERGONOMICALLY  
WELL-BALANCED GRIP

**Radii Xpert LED Curing Light**  
1 x Radii Xpert handpiece - 5600300  
Replacement parts and accessories  
available for individual sale



## RADII-CAL CX

The collimated beam of the Radii-Cal CX delivers curing uniformity across all curing depths. This ensures a fast and predictable cure for all restorations.



COLLIMATED  
LIGHT



ERGONOMICALLY  
DESIGNED



SMART BATTERY  
TECHNOLOGY

**Radii-Cal CX LED Light**  
1 x Radii-Cal CX LED Curing Light - 5600110  
Replacement parts and accessories  
available for individual sale



## ULTRAMAT X

The Ultramat X is 30% quieter than the nearest leading capsule mixer\*. Insert and remove capsules with one hand due to a state-of-the-art clamp design. Full capsule compatibility. 5 year warranty.

\*Source: Waveform Acoustics assessment (2024)

**Ultramat X**  
Ultramat X - 5546070

# PAIR WITH POLA

Luna 2 offers a variety of specialty shades that enable clinicians to customize restorative results to meet individual patient needs. While the Pola range enhances the overall brightness of a patient's smile, Luna 2 effectively addresses specific imperfections.

Use Luna 2 Bleach Shades alongside the Pola range for minimally invasive smile transformations.



**BEFORE**

**AFTER**

Images courtesy of Dr Joana Couto (PORTUGAL)

## Luna 2

- 8452021 - Luna 2 XB Syringe
- 8452022 - Luna 2 2XB Syringe
- 8452071 - Luna 2 XB Complet Refills
- 8452072 - Luna 2 2XB Complet Refills

## Pola Rapid 6%

Available in 1 or 3 patient kits

## Pola Day/Night

Available a range of delivery presentations



Scan the QR code to view SDI's composite range



YOUR SMILE. OUR VISION.

02/2025

M880622 A



+036M88062217

**MADE IN AUSTRALIA**  
by SDI Limited  
Bayswater, Victoria 3153  
Australia  
[www.sdi.com.au](http://www.sdi.com.au)

**AUSTRALIA** 1800 337 003  
**AUSTRIA** 00800 0225 5734  
**BRAZIL** 0800 770 1735  
**FRANCE** 00800 0225 5734  
**GERMANY** 0800 100 5759

**ITALY** 00800 0225 5734  
**NEW ZEALAND** 0800 808 855  
**SPAIN** 00800 0225 5734  
**UNITED KINGDOM** 00800 0225 5734  
**USA & CANADA** 1 800 228 5166